

SIMPLE SMART STITCHING

# DR Stitching Solutions

Imaging the full spine or hips to ankles can be a challenge. There are a number of issues that one has to consider such as process of care, patient safety, efficiencies and outcomes. Whether you use a single shot long detector or multiple exposures with a 14x17 detector, we have a solution to help stitch your DR images effectively each and every time.



# Mobile Positioning Partners

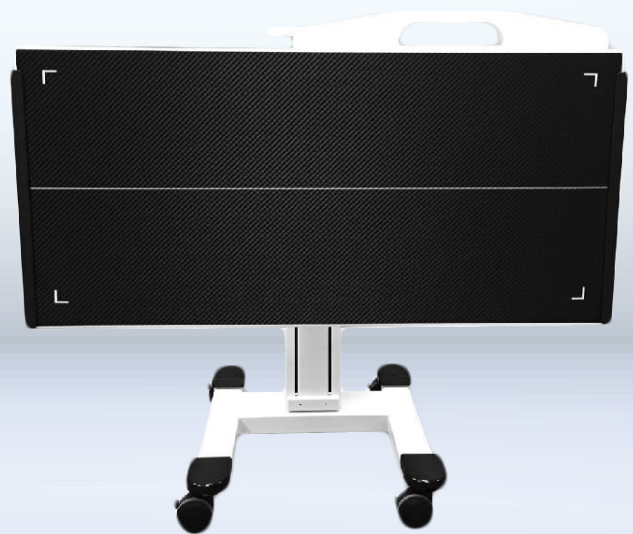
---

The **Mobile DR Panel Positioning Partner** is a multipurpose holder that allows spine exams to be performed in the most difficult imaging environments. This feature-laden, robust mobile holder is effectively weighted, providing an extremely low center of gravity to assure stability and avoid causing harm to patient and operator or damaging equipment due to tipping. Its compact footprint makes it simple to drape and keep sterile when used in surgery and easy to store when not in use. The Positioning Partner is available in multiple configurations to hold a variety of detectors.

## PRODUCT ADVANTAGES

---

- Piston driven lift assist
- Weighted base that will not tip
- Can be positioned portrait, landscape and supine for under table exams
- Small footprint makes item easy to drape for surgery
- Telescoping horizontal arm
- Four locking casters



# Floor Mounted Column

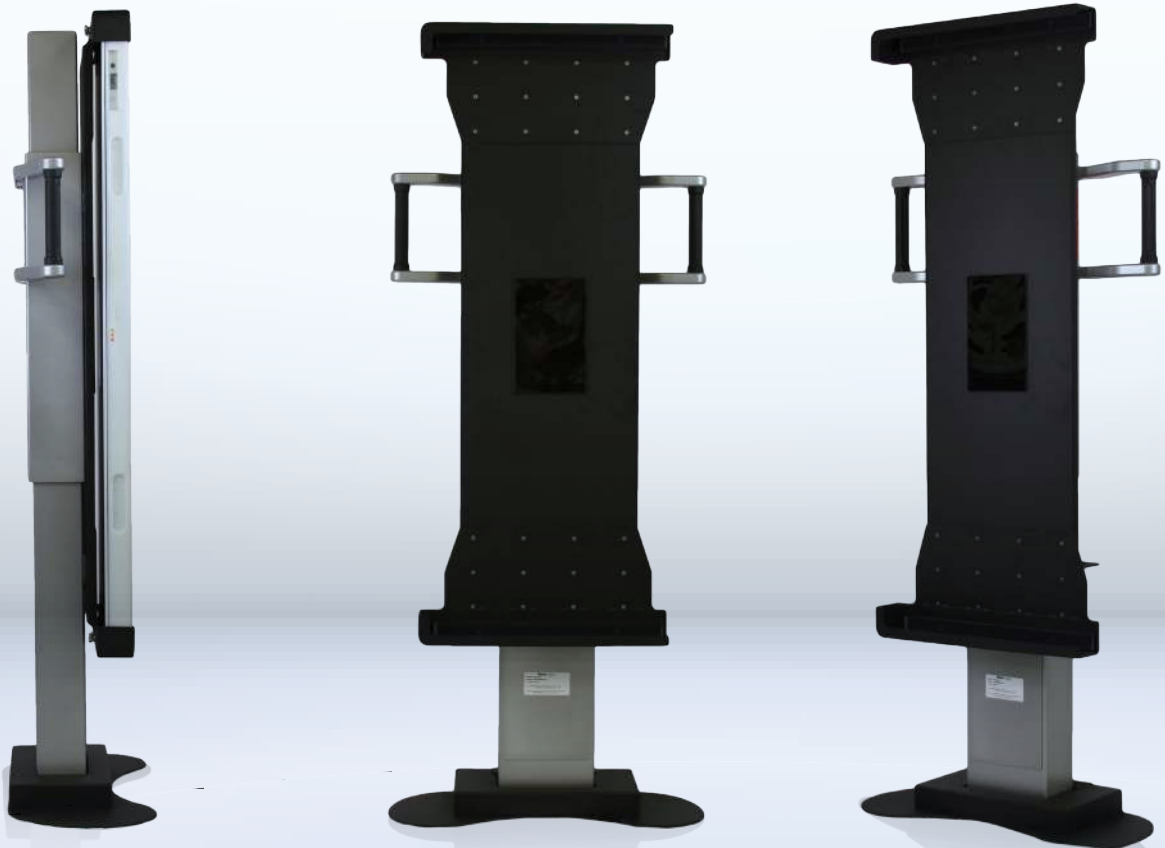
---

Another modular solution that can work with a wide array of detector sizes and setups, the **Floor Mounted Column** has a dual hand locks with easy to use zero gravity counter balancing. This is an ideal solution for dedicated room work for upright exams in both portrait and landscape orientations.

## PRODUCT ADVANTAGES

---

- Zero gravity counterbalancing for vertical travel
- Detector can be rotated 90 degrees for portrait and landscape imaging
- Ergonomic hand locks on both sides of detector
- Secure floor mounting
- Can be used with or without an anti-scatter grid



# Mobile and Wall Mounted DR Trans-Former Grid Cabinets

---

Available in multiple configurations, the **Mobile or Wall Mounted Trans-Former DR Panel Grid Cabinets** simple yet reliable product line allows for a single 14x17 detector to accomplish full spine or hips to ankles images. With no electric needed, this perfectly weighted zero gravity counter balance system allows for effortless vertical travel. Available in both a wall mounted and mobile configuration this solution is turnkey ready to go out of the box. Just uncrate it and go. This is built for precise fitment of your 14x17 or 17x17 detector and is available with a single detector, two detectors or 3 detectors with built in overlap.

## PRODUCT ADVANTAGES

---

- Designed and engineered for precise fitment of your DR panel
- Robust and stable design improves patient safety and reduces patient hold times
- Milled detector slots with built in overlap to ensure proper image combination/stitching
- Counterbalanced vertical travel provides “zero-gravity” feel and effortless movement
- Casters offer quick clinical turnaround, portability from room to room and easy storage
- Pre-installed anti-scatter grid performance matched to your DR detector specifications
- Precision mechanical design requires no electricity
- Available with 14x17, 14x34 and 14x50in. grid cabinets



# Stitching Platform with Handles

---

Long leg and spine imaging can be tricky in a digital environment. The **Stitching Platform with Handles** is a critical tool for these specialized views. The simple design keeps cost down while still performing as needed – keeping the patient immobile during multiple exposures reducing motion all while raising the patient up.

## PRODUCT ADVANTAGES

---

- Immobilize patient to reduce motion
- Casters to easily position and return to storage
- Slip resistant base for patient safety
- Rated up to 750lb. of patient weight
- Radio-opaque sliding ruler



## CONTACT REINA IMAGING

Every customer has unique requirements. Whether you are an OEM, dealer or end user, Reina Imaging has a dedicated team that can help. Together, we'll work to understand and create solutions for your particular needs. Give us a call or send us an email today to get started with your free consultation.

### ADDRESS

6107 W. Lou Ave.  
Crystal Lake, IL 60014

### WEBSITE

[reinaimaging.com](http://reinaimaging.com)

### EMAIL

[customer\\_service@reinaimaging.com](mailto:customer_service@reinaimaging.com)

### TOLL FREE

800-752-4918

### PHONE

815-356-8181

### FAX

815-356-8270



**Reina**Imaging

Reimagine Radiography

