

CONTACT REINA IMAGING

Every customer has unique requirements. Whether you are an OEM, dealer or end user, Reina Imaging has a dedicated team that can help. Together, we'll work to understand and create solutions for your particular needs. Give us a call or an email to get started with your free consultation today.

EMAIL

customer_service@reinaimaging.com

ADDRESS

6107 W. Lou Ave.
Crystal Lake, IL 60014

WEBSITE

reinaimaging.com

TOLL FREE

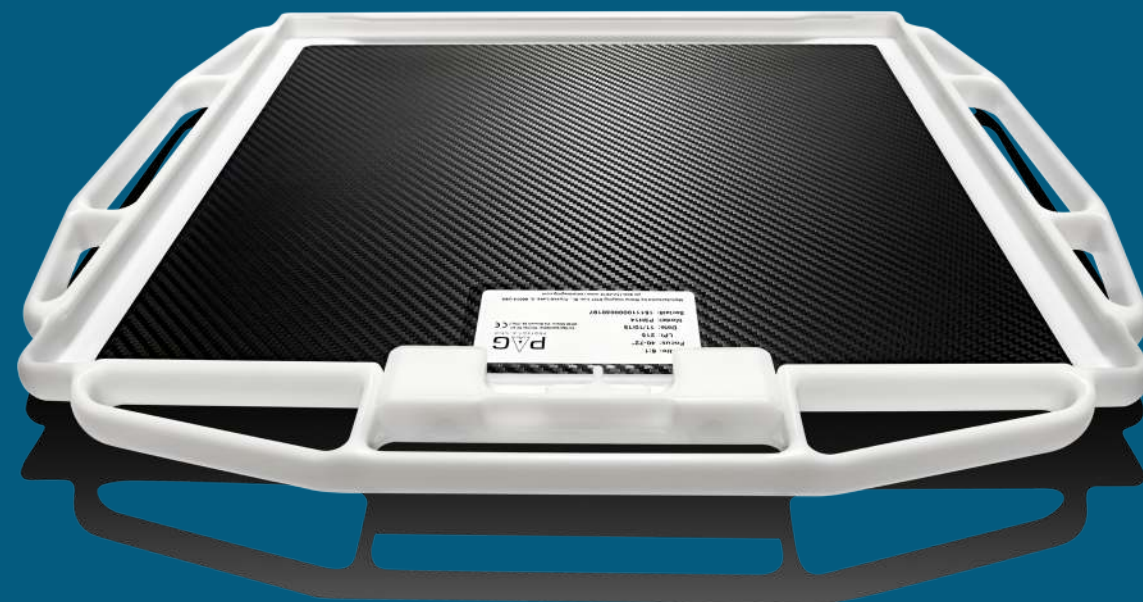
800-752-4918

PHONE

815-356-8181

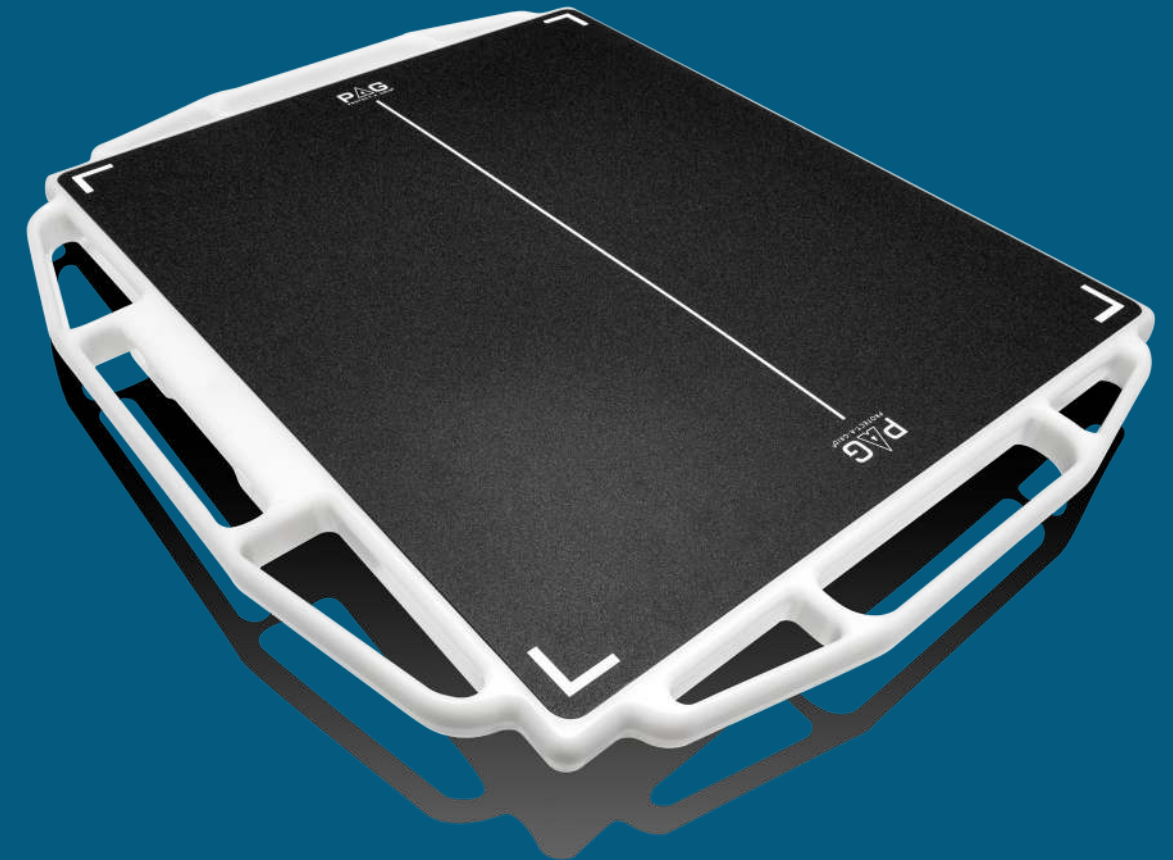
FAX

815-356-8270



INNOVATION MEETS PROTECTION

Protect-A-Grid™ DR Panel Encasements



Experience peak grid performance and panel protection with the line of Protect-A-Grid™ encasements.

ReinaImaging



ReinaImaging

PRODUCT ADVANTAGES

Lightweight	Drop protection	Cable management
Twin-lock™	Available in various sizes	Customized panel specific
Ergonomic handle	Air-Ride Corners™	Cutouts available for power button and LEDs
Curved corners	Grid fully enclosed	

PROTECT-A-GRID DR PANEL ENCASEMENTS

Reina's full line of custom built Protect-A-Grid™ encasements feature all enclosed polycarbonate fabrication designed to reduce the chance of incidental grid damage from atypical handling. With sleek curved corners, they can easily slide under patients and/or stand upright for cross-table examinations. They also provide superior structural integrity with reinforced sides to prevent any damage to the x-ray grid.

PAG HANDLER AND STYLE OPTIONS

PROTECT-A-GRID: HANDLE ON LONG AXIS, 17"



PROTECT-A-GRID: HANDLE ON SHORT AXIS, 14"



PROTECT-A-GRID: SNAP-ON, NO HANDLE



PROTECT-A-GRID: TRI-HANDLE



PROTECT-A-GRID: TWO HANDLE



PROTECT-A-GRID: BARIATRIC



Peace of mind, stability and security.

Reina Imaging's Twin-Lock™ Dual Locking design gives you peace of mind, stability and security – ensuring your detector is locked in place no matter how your PAG encasement is positioned.

TWIN-LOCK™ DUAL LOCKING DEVICE

