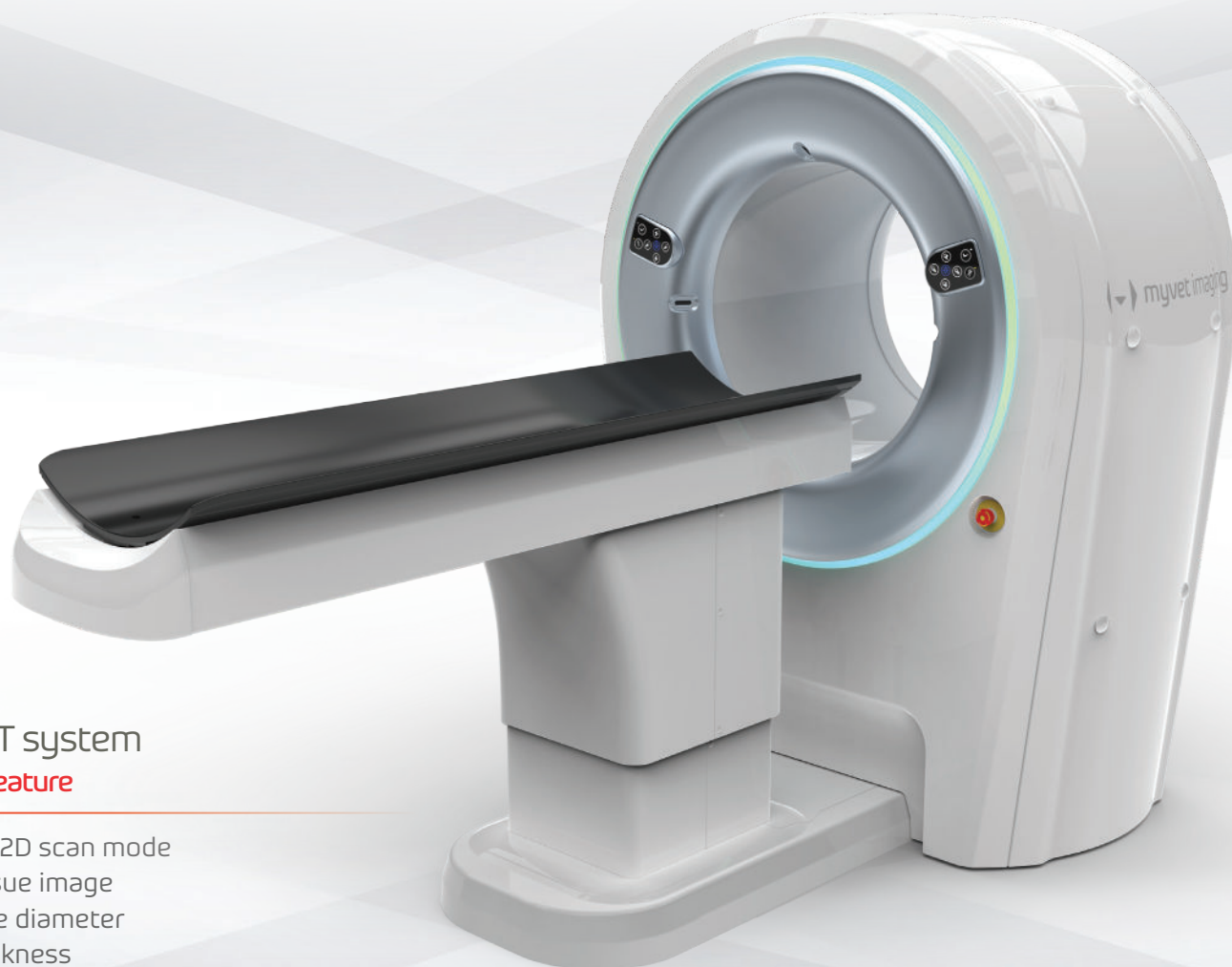


THE PREFERRED WHOLE BODY  
SCANNING METHOD

# myvet CT i3D<sub>SL</sub>



Spiral linear CT system  
with scout view feature

- 3D CT mode and 2D scan mode
- Superior soft tissue image
- 23 inch wide bore diameter
- Narrow slice thickness
- Large FOV
- Fast installation and easy set up

# Acquire high quality CT images to make clinical diagnoses

## Advanced Technology Application

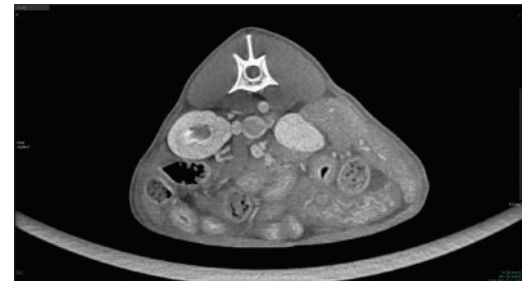
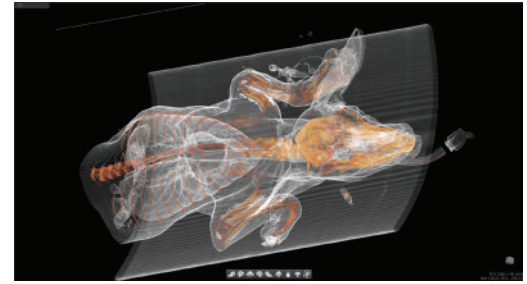
The new standard for veterinary computed tomography is the MyVet CT i3D SL, incorporating innovative spiral linear technology. The linear detector acquires thin image slices within a large field of view as the x-ray tube circles around the advancing table.

## Large Bore Design in a Compact Footprint

A large bore accommodates medium/large dogs and the elevating table facilitates animal positioning in center of bore to maximize image acquisition. The overall compact system design provides a more efficient and space-saving work environment.

## Obtain High Image Quality

The 0.4 mm to 0.8 mm narrow slice thickness and optimized image contrast with 14-bit grey-scale maximizes image quality. Acquiring images with a narrow beam superior image contrast by reducing scattered radiation effects associated with cone beam image acquisition. Images can be displayed using 3D reconstruction techniques.



## Specifications

Detector Type	CMOS Photodiode
Pixel Size	99 $\mu$ m
A/D	14 bit
Tube Voltage	50 ~ 120 kVp
Tube Current	10 mA

Exposure Time	20 Sec, 40 Sec, 60 Sec
CT FOV	12"x 5" / 12"x 10" / 12"x 16"
Scout View FOV	9.8"x 35.4"
2D Scan FOV	9.8"x 35.4"
Line Voltage (input)	100 ~ 220V, 15A

\* Specifications subject to change without prior notice \*

myvet CT i3D<sub>SL</sub>



81 Ruckman Rd. Closter NJ 07624  
Tel: 201.561.0223 Support: 201.585.0302  
information@myvetimaging.com www.myvetimaging.com