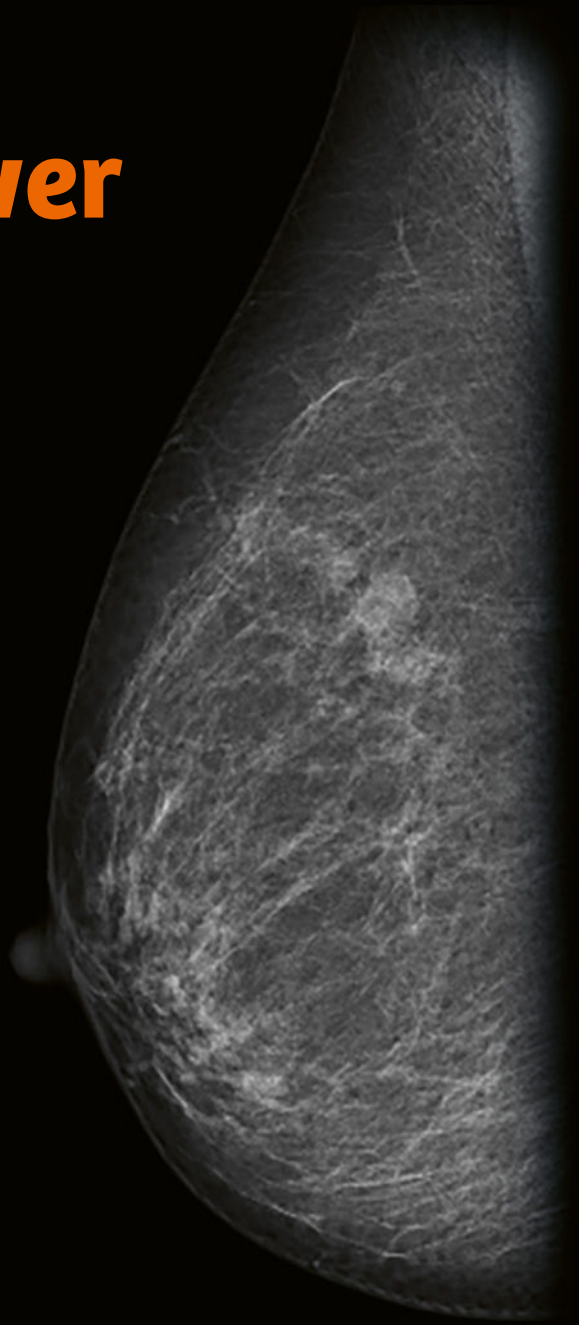


MAMMOMAT Revelation

Embrace the power of more

siemens-healthineers.us/mammography

1aaa078



SIEMENS
Healthineers

MAMMOMAT Revelation

**Embrace the power
of more**



**What if you could be more than just a healthcare provider
along a woman's breast health journey?**

**What if you could see more of her anatomy
in order to provide answers with confidence?**

**What if you could do more not just for your patients
but also for your practice?**

With Siemens Healthineers, you can expect more than just a healthcare company. We're a partner that provides solutions from discovery to recovery along the entire breast health journey. When you embrace the power of more with Siemens Healthineers, you'll experience how innovation can provide more accuracy, efficiency, and comfort to achieve the goal we all share: to save more lives.

**Be more, see more, and do more in your patients' lives.
It's not just mammography, it's so much more ...**



Be more

- Be more than just mammography
- Be more for the woman's experience
- Be more than a standard exam



See more

- See more than you've ever seen before
- See more differently
- See more with certainty

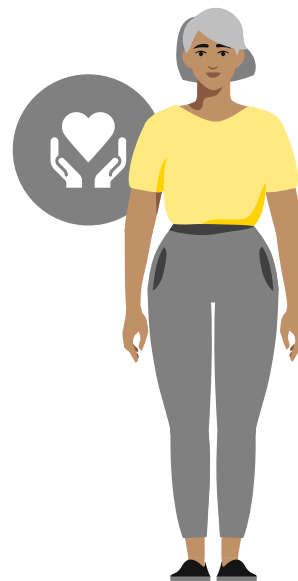


Do more

- Do more exams than you did before
- Do more than the average eye
- Do more with better support
- Do more because you get more

Be more

Be more than just a provider in a woman's breast health journey. With the Siemens Healthineers 360° approach, you can tackle breast cancer holistically and not just at different points in time. Every woman's journey is different, so her experience should be personalized and her comfort should be prioritized. Be more to each woman by offering her an experience that adapts to her uniqueness – from discovery to recovery.



Be more than just mammography

Breast Health 360°

Highest degree of care. Because we care.

Breast care is not a one-size fits all approach and it can be difficult to keep up with demands of your patients and practice. Our Breast Health 360° portfolio is centered on helping you overcome challenges in breast cancer care, with innovative breast care solutions along the entire clinical workflow. We are proud to be the only company that can provide a holistic and personalized 360° approach with breast care solutions in every step of the way.

From looking into a patient's history, to screening and diagnosis, to treatment and follow-up – we are always by your side. We provide accurate, human-centric, and economic solutions to empower your decisions in every step of the Breast Health Journey.

Be more for the woman's experience

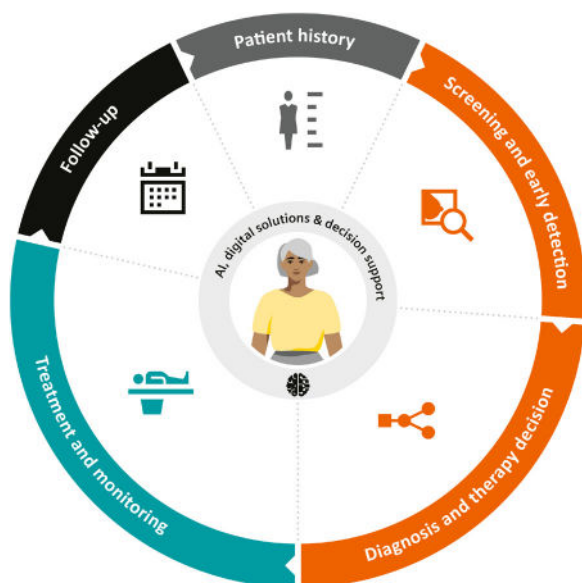
Many women associate mammograms with pain, discomfort, and anxiety. This is why we offer unique comfort features to create a soothing ambiance:

MoodLight

Our MoodLight function bathes the examination room in soothing lights that help women unwind and remain at ease during their exam.

Wall decor

Our wall decorations with Breast Health Moods create a relaxing and positive atmosphere that helps women feel safe and calm.



*Breast Health 360°:
solutions in every step of the Breast Health Journey*

SoftComp Paddles

Designed to fit the physique of the woman's anatomy, the soft-curved edges of our SoftComp Paddles offer higher patient comfort and easier positioning.

Free breathing

With MAMMOMAT Revelation there is no need for the woman to hold her breath during the scan, putting her more at ease.

Be more than a standard exam

OpComp and SoftSpeed

MAMMOMAT Revelation's personalized soft compression technology prevents unnecessary pain by adjusting to the anatomy of each woman's breast:

- OpComp calculates and applies optimal compression
- SoftSpeed slows the compression paddle down as soon as it reaches the breast
- More time for proper positioning and less operator variation

AEC (Automatic Exposure Control) and OpDose®

Always the right dose for each woman with optimal image results:

- AEC analyzes the complete breast to calculate the required dose for each breast individually
- Pectoral muscle automatically excluded in MLO views
- OpDose determines exposure parameters depending on breast density and thickness
- Different dose levels further optimize exposure
- Five predefined dose levels available



SoftComp Paddles

See more

See more than you've ever been able to see before, giving cancer no place to hide. MAMMOMAT Revelation is designed to give you more clinical certainty with its 50 degree wide-angle. See more in a different way with synthetic options that offer additional insight with no additional dose. More information gives you greater accuracy and higher confidence in your diagnosis. See more, detect more, and rule out more.



See more than you've ever seen before

50° Wide-Angle Tomosynthesis

Our MAMMOMAT Revelation with 50° Wide-Angle Tomosynthesis overcomes diagnostic challenges like overlapping tissue. With our 50° angle, you get the highest number of 25 projections, helping to gain deeper insights, enabling more accurate¹ and earlier detection. Only with 50° Wide-Angle Tomosynthesis you can achieve depth resolution that is 3.5 times higher than with a narrow angle.² Benefit from the highest depth resolution on the market, enabling you to see more and detect more.

MAMMOMAT Revelation renders anatomical details clearly visible in both 50° Wide-Angle Tomosynthesis and 50° Wide-Angle Biopsy. Wide-angle tomosynthesis makes it easier to identify masses and asymmetries compared to FFDM. An image is taken every two degrees resulting in 25 low-dose projections – that's 75% more information to help doctors make an informed decision.

See more differently

Insight 2D

Insight 2D is a synthetic mammogram that is rendered from the tomosynthesis volume and offers an FFDM-like image impression, taking the 2D viewing and reading habits of radiologists into account:

- Use Insight 2D to compare previous images
- No additional dose
- Fast side-by-side comparison of both breasts
- Assess density^{3,4}

Insight 3D

Insight 3D provides a synthetic rotating visualization for improved orientation in the tomo volume:

- Visualization of microcalcifications⁵
- Boost your diagnostic confidence with this unique view
- Preferred for surgical planning

See more with certainty

Tomo Spot compression

In inconclusive cases, Tomo Spot compression helps assess screen-detected masses, asymmetries, architectural distortions, and microcalcifications.

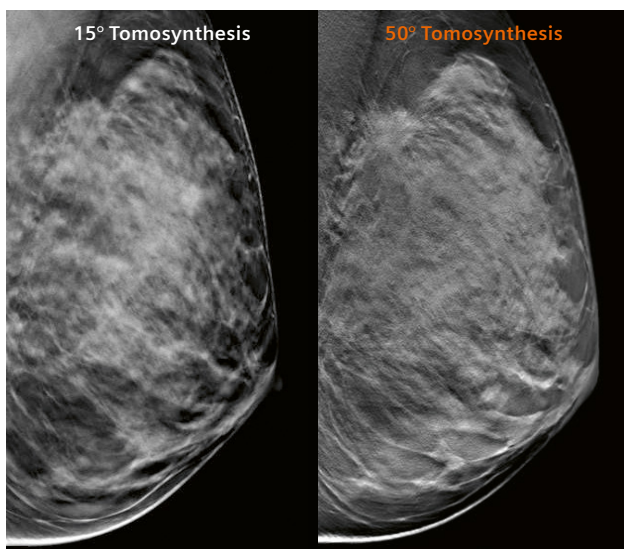
Benefit from 50° Wide-Angle Tomosynthesis with our SpotPlus compression paddle:

- Focus on a smaller area of the breast
- Increase compression in one spot while still showing the surrounding tissue
- Help avoid unnecessary biopsies
- Add confidence in tomosynthesis imaging

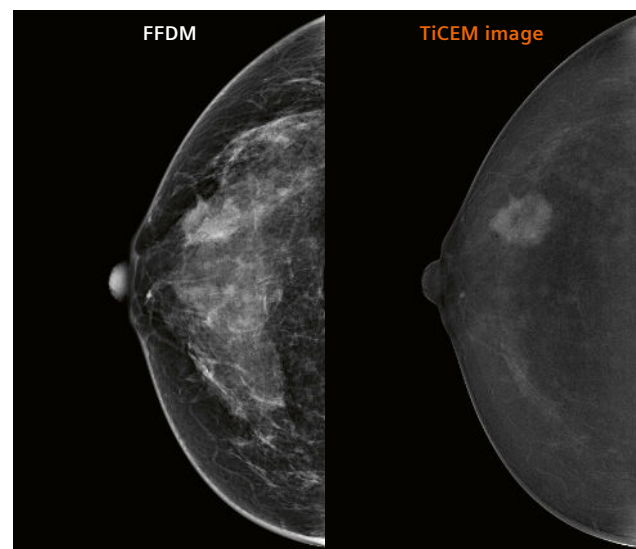
TiCEM – Titanium Contrast Enhanced Mammography

Some challenging cases require additional diagnostic information for confident decision-making. One possible adjunct examination is MRI, which is time-consuming, cost-intensive, and not always available. MAMMOMAT Revelation offers the option to integrate Titanium Contrast Enhanced Mammography (TiCEM) as a cost-effective diagnostic alternative:

- Optimized titanium filter reduces X-ray tube load
- Helps detect or rule out inconclusive lesions⁶



Clinical case: large palpable mass posterior in the upper quarter of the left breast in a 55-year-old woman. A biopsy later confirmed the mass to be invasive ductal carcinoma grade 2.⁷ (1aaa025)



TiCEM – malignant: dense breast with irregular palpable mass, BIRADS 5 invasive ductal carcinoma.⁷ (1aab510)

Do more

Do more than you thought possible for your patients and your practice with Siemens Healthineers as your partner. Rely on our service team to keep you up and running when your patients need it most. MAMMOMAT Revelation's optimized workflows keep exams quick and seamless, allowing you to do more. With a mammography system that comes standard with the latest technology, you can do more because you get more right from the start.



Do more exams than you did before

Optimize your workflow with our wide selection of innovative features:

50° TomoFlow

Simultaneous image reconstruction in the background means uninterrupted acquisition so you and your patients don't need to wait between views, allowing you to boost your efficiency with 6-minute exam times.

Insight BD – Breast Density Assessment

Objective classification supporting you in instant risk stratification right at the acquisition workstation for more predictable workflows and personalized breast care.

One-click philosophy

Reduce unnecessary steps in your screening workflows with the intuitive one-click philosophy: the system moves to the predefined examination position with just one touch of a button.

Turbo Calibration

Calibrate your system every 3 months⁸ in only five minutes with Turbo Calibration. Profit from 90%⁹ less system downtime caused by detector calibration.

Biopsy workflow with InSpect

Receive your specimen scan within 20 seconds right on the mammography system with InSpect, the integrated specimen scanner, reducing the need for additional scan devices and optimized biopsy workflows.

teamplay Mammo Dashboard

teamplay Mammo Dashboard^{10,11} provides an intuitive overview of institution-specific KPIs to reveal workflow optimization potentials and support a high quality of care in breast imaging.

Do more than the average eye

MAMMOVISTA B.smart

MAMMOVISTA B.smart covers the full spectrum of multimodal diagnostics from mammography to MRI and ultrasound. As an agile, vendor-neutral solution, it delivers exceptional performance for radiologists faced with more time-consuming tomosynthesis reading. Both Transpara and iCAD can be fully integrated with MAMMOVISTA B.smart for interactive clinical decision support.

Transpara

Transpara® powered by Fusion AI™ generates impressive new results supported by clinical evidence worldwide. SmartSort Technology based on deep-learning case analysis and interactive lesion detection allows for evidence-based breast AI.

iCAD (CAD = Computer-aided detection)

iCAD's SecondLook Digital CAD analyzes images from Siemens Healthineers' full-field digital mammography systems and generates CAD marks to highlight suspicious areas, such as masses and microcalcifications.

Do more with better support

Response time

Today, the service experience goes above and beyond pure maintenance. Service can make the difference to your daily operations and help you evolve. With our services, we are by your side whenever you need us. Siemens Healthineers specialists are available for instant remote assistance 24/7 in every time zone.

- In 80% of cases you talk to a live person the first time you call.
- If our lines are busy, you get a call back within 30 minutes.
- Most technical calls are fixed the first time, and if they aren't, a service engineer will be deployed onsite.

Training and education

With our personalized education and training, your staff will be expert users who run your equipment at optimal efficiency in no time. Stay current with PEPconnect and transform care delivery for enhanced patient outcomes. PEPconnect is our personalized online education experience designed for healthcare professionals that's customized to their role and learning behavior— designed to increase their competency, efficiency, and productivity.

Do more because you get more

High value system

Even the standard version of our MAMMOMAT Revelation is a high-end system. Equipped with our time-tested tungsten tube and the robust detector you get a reliable product with a very long lifetime. Our PRIME Technology is integrated in every system which allows a dose reduction by up to 30%¹² without compromising image quality.

Modular design

Thanks to its modular system design, MAMMOMAT Revelation evolves with your requirements. You may start with a lower initial investment, and upgrade as your needs change or grow. Enjoy greater investment security by having the latest technologies integrated in one device.

Customer amenities free

Benefit from a variety of engaging marketing materials – posters, product images, and videos – to share with referrers and patients, display at your facility, or post on your website or social media channels.

MAMMOMAT Revelation is not commercially available in all countries. Due to regulatory reasons its future availability cannot be guaranteed. Please contact your local Siemens Healthineers organization for further details.

On account of certain regional limitations of sales rights and service availability, we cannot guarantee that all products/services/features included in this brochure are available through the Siemens Healthineers sales organization worldwide. Availability and packaging may vary by country and are subject to change without prior notice.

The information in this document contains general descriptions of the technical options available and may not always apply in individual cases. Siemens Healthineers reserves the right to modify the design and specifications contained herein without prior notice. Please contact your local Siemens Healthineers sales representative for the most current information. In the interest of complying with legal requirements concerning the environmental compatibility of our products (protection of natural resources and waste conservation), we may recycle certain components where legally permissible. For recycled components we use the same extensive quality assurance measures as for factory-new components.

Any technical data contained in this document may vary within defined tolerances. Original images always lose a certain amount of detail when reproduced.

- 1 Compared to FFDM; PMA P140011/S001 & P140011/S003; Georgian et al. (2019): Can Digital Breast Tomosynthesis Replace Full-Field Digital Mammography? A Multireader, Multicase Study of Wide-Angle Tomosynthesis. *AJR* 2019, pp. 1-7. doi.org/10.2214/AJR.18.20294
- 2 Maldera et al. (2016): Digital breast tomosynthesis: Dose and image quality assessment. *Physica Medica*, pp. 1-12.; Marshall N.W. and Bosmans H. (2012): Measurements of system sharpness for two digital breast tomosynthesis systems. *Phys. Med. Biol.* 57, pp. 7629-7650.; Rodríguez-Ruiz A. et al. (2016): Evaluation of the technical performance of three different commercial digital breast tomosynthesis systems in the clinical environment. *Physica Medica* 32, pp. 767-777.
- 3 Talk of Prof. Van Ongeval at Breast Care Day 2019, Vienna; <https://www.siemenshealthineers.com/mammography/information-gallery/videos>, 02/03/2020.
- 4 Data on file.
- 5 Responses from more than 400 radiologists. Survey conducted at RSNA 2014, ECR 2015 and Advisory Board 2015; Tani, H. et al.: Assessing Radiologist Performance and Microcalcifications Visualization Using Combined 3D Rotating Mammogram (RM) and Digital Breast Tomosynthesis (DBT) *LNCS Vol. 8539* pp 142-149 (2014).
- 6 González-Huebra I, Malmierca P, Elizalde A, Etxano J, Vejborg I, Uhlenbrock D, Pina L. The accuracy of titanium contrast-enhanced mammography: a retrospective multicentric study. *Acta radiol.* 2020 [Ahead of Print].
- 7 Results from case studies are not predictive of results in other cases. Results in other cases may vary.
- 8 Country-specific regulations may differ from manufacturer recommendation
- 9 90%: compared to former version VC10
- 10 teamplay Mammo Dashboard supports selected Siemens Mammography systems. Please contact your Siemens representative for more details.
- 11 teamplay Mammo Dashboard does not yet support all displayed functionalities, they are planned for upcoming versions. Future availability of those functionalities cannot be guaranteed. Siemens Healthineers reserves the right to modify the design and specifications contained herein without prior notice.
- 12 Compared to grid-based acquisition with Mammomat Inspiration, depending on breast thickness – L.B. Larsen, A. Fieselmann, H. Pfaff, T. Mertelmeier: Performance of grid-less digital mammography acquisition technique for breast screening: analysis of 22,117 examinations Presentation B-1025 ECR 2015.

Siemens Healthineers Headquarters

Siemens Healthcare GmbH
Henkestr. 127
91052 Erlangen, Germany
Phone: +49 9131 84-0
siemens-healthineers.com

USA

Siemens Medical Solutions USA, Inc.
Healthcare
40 Liberty Boulevard
Malvern, PA 19355-9998, USA
Phone: +1-888-826-9702
siemens-healthineers.us