

# Do more at the point of care.



# Do more with ultrasound.

Supporting **increased diagnostic confidence earlier in the care path** has real clinical and economic benefits in today's healthcare environment—and portable ultrasound has played a key role in making that possible. Now Konica Minolta is taking it to a whole new level, with the SONIMAGE® HS1 Compact Ultrasound System. The HS1 System delivers image quality that is categorically sharper and a probe with better resolution



at a higher frequency, in a surprisingly small device that's exceptionally easy to use. This allows you to make diagnoses that you simply couldn't before, and provide treatment **more confidently at the point of care**. Just as important, Konica Minolta is firmly committed to helping you put these new possibilities into practice, with innovative, customized clinical education and technical support designed to make you **more proficient, more quickly**.

Do more  
for your  
practice.

## ORTHOPEDICS

**The new essential.** The HS1 System is such a profound improvement in portable ultrasound, you'll want to incorporate it as a primary diagnostic tool, prior to or instead of an MRI.<sup>1,2</sup> With dramatically sharper image quality and the advantage of real-time assessment, ultrasound may allow you to see more patients, assess them more quickly and comfortably, and move to treatment faster.

## SPORTS MEDICINE

**Game-changing performance.** The HS1 System is a powerful tool for assisting you to help your patients get back in the game faster. Its groundbreaking image quality, improved resolution probe and easy portability let you make accurate on-the-spot assessments, on the field or in your office. That means more confident decision-making, leading to quicker, more precisely targeted treatment.



Assess injuries more quickly and confidently. Perform injections more accurately and effectively. Get patients back in action faster.

## PHYSIATRY

**Deeper understanding.** With its best-in-class imaging and high resolution probe for superficial scanning, the HS1 System can increase diagnostic confidence and the effectiveness of rehabilitative treatments. Plus ultrasound allows dynamic scanning with direct interaction between the physician and the patient, as well as allowing treatment to begin at the same time.

## RHEUMATOLOGY

**The best care in the joint.** The extraordinary clarity and power of the HS1 System help take your ability to evaluate and treat joint disorders to a different level. You'll also benefit from an on-board Rheumatology Reporting Package that gives you an integrated, customizable protocol for tracking, organizing and storing images efficiently.

## PODIATRY

**A big step up.** Sharpen your diagnostic acumen. Increase your patient volume. Improve patient satisfaction. Build your practice. The HS1 System lets you see more, assess more accurately, and treat more effectively. And you'll appreciate how the small footprint and excellent maneuverability of its hockey stick transducer aid in evaluating difficult-to-access joints in the ankle and foot.

# Ultrasound like you've never seen before.

The SONIMAGE® HS1 Compact Ultrasound System is a powerful next-level system in the world of portable ultrasound. **Quite simply, it's where MSK is headed.**

With advanced MSK imaging functionality that delivers superior image detail and contrast resolution in a compact, easily portable unit, the HS1 System promotes confident decision-making and treatment at the point of care. It's also remarkably intuitive, with a simplified 8-button console and touchscreen with focused MSK exam presets that help minimize your learning curve.





## Tailor-Made for MSK

From its ultra-clear imaging and intuitive usability to an array of features designed for the needs of your practice, the HS1 System is the ultrasound solution for musculoskeletal evaluations.

### Elastography

Invaluable for assessing changes in tendon and ligament elasticity, our strain elastography software calculates and displays the relative stiffness of tissue, using an image generated from the strain created by uniform pressure of the transducer on the tissue.

### Wideband Frequency Linear Transducers

The SONIMAGE® HS1 L18-4 is a broad frequency linear probe that offers both near-field resolution and deep penetration for scanning both superficial and deep joints and structures.

The HL18-4 hockey stick linear transducer is especially suited to MSK and pain management applications, reaching difficult to access areas with its small footprint and maneuverability.

### SNV™ Simple Needle Visualization

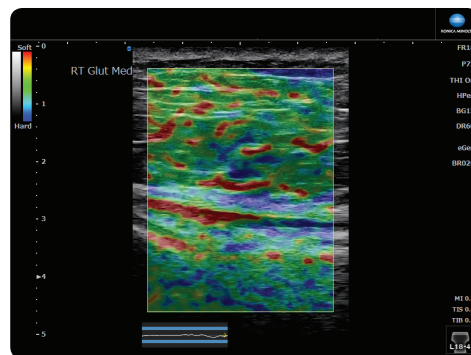
Using an advanced algorithm combining in-plane and out-of-plane methods to improve needle visibility, the SNV feature lets you increase your accuracy in needle placement, making it the ideal solution for guided injections in pain management.<sup>3,4</sup> The out-of-plane method is especially beneficial in steep needle approaches

### Rheumatology Reporting Package

Track and organize ultrasound images efficiently, storing still images along with real time clips and assigning them to each joint. This integrated, customizable protocol can be operated with a foot switch, allowing the operator to move quickly through the exam without taking their hands off the probe.

### Remote Assist

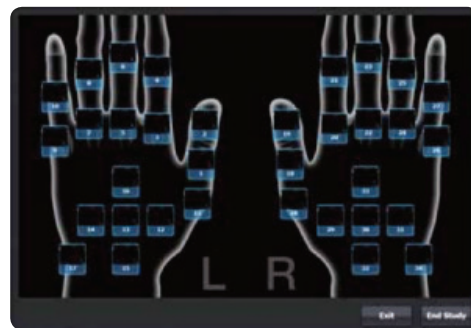
Get expert help with applications, troubleshooting and image optimization, along with educational training, without leaving your office.



Elastography software accurately measures changes in tendon and ligament elasticity.



Simple Needle Visualization (SNV™) helps increase accuracy in guided injections.



The Rheumatology Reporting Package lets you manage ultrasound images efficiently.

# Get up to speed faster.



The SONIMAGE® HS1 System opens exciting new possibilities for your practice. And we want to help you take full advantage of them. That's why the HS1 System comes with an exceptionally robust set of educational offerings, customized to your needs.

- Start-up support, including system installation, applications training, exam presets, efficient workflow, customized screen menus, guiding protocols, physician training and assistance with patient cases
- Webinars and procedural videos
- Preceptorship program
- Offsite training at our regional facilities
- mskNAV™ and SonoSim® MSK ultrasound training systems
- Complimentary workshops



## With Remote Assist Help is Always Nearby

Konica Minolta is all about practice productivity, which is why we make it as fast and easy as possible to get your questions answered and issues resolved. That's the idea behind the Remote Assist program. Without leaving the office or waiting for a service call you can schedule an appointment to:

- Determine whether an issue is system- or operator-related
- Get setup and support for IT features
- Reinstall exam presets and system configuration, following upgrade, service issue or system replacement
- Modify presets and configuration
- Receive applications support
- Train on and get support for new features, applications and transducers
- Give new staff system overview training



We can see what you see, and offer expert guidance in real time, with Remote Assist.



Do more for  
Hal's hands.

---

# Konica Minolta Healthcare

Konica Minolta Healthcare is a world-class provider and market leader in medical diagnostic imaging and healthcare information technology. With over 75 years of endless innovation, Konica Minolta is globally recognized as a leader providing cutting-edge technologies and comprehensive support aimed at providing real solutions to meet customer's needs and helping make **better decisions sooner**.

1. Jacobson, Jon A. Musculoskeletal Ultrasound: Focused Impact on MRI. *American Journal of Roentgenology*, 2009;193:619-627.
2. Jacobson, Jon A. Musculoskeletal ultrasound and MRI: which do I choose? *Semin Musculoskelet Radiol*, 2005;Jun;9(2):135-49.
3. Hirahara, Alan M and Panero, Alberto J. A Guide to Ultrasound of the Shoulder, Part 1: Coding and Reimbursement. *American Journal of Orthopedics*, March/April 2016.
4. Daley, Erika L, et al. Improving Injection Accuracy of the Elbows, Knee, and Shoulder. Does Injection Site and Imaging Make a Difference? A Systematic Review. *Sports Medicine Update*. January 21, 2011.

mskNAV is a trademark of 7D Imaging, Inc.

SonoSim is a registered trademark of SonoSim, Inc.

© 2017 Konica Minolta Healthcare Americas, Inc.



**KONICA MINOLTA**

**Konica Minolta Healthcare Americas, Inc.**

411 Newark Pompton Turnpike

Wayne, New Jersey 07470

Tel: 973.633.1500 Fax: 973-523-7408

[konicaminolta.com/medicalusa](http://konicaminolta.com/medicalusa)

M1027 117 RevA